

HOW MUCH WILL I PAY?

Rent: 23 500 CZK / month
 Service Charges: 4 200 CZK / month
 Electricity: 800 CZK / month
 Water: 500 CZK / month
 Electricity and water charges are billable advances. The final billing is done annually according to actual consumption.

ADDITIONAL INFORMATION

Garage parking (optional): 2 300 CZK / month

DESCRIPTION

We offer bright, cozy, and fully furnished apartments in the Mint Living Vysočanský Mlýn residence.

COMFORTABLE LIVING, READY FOR MOVE-IN

Stylish apartments with quality furniture, a modern kitchen, and flexible bedroom layouts. A spacious bathroom, storage areas, a television, and Wi-Fi are all included. In the summer, enjoy the loggia with seating.

IDEAL LOCATION

The residence is located near the Vysočanská metro station, w...

EQUIPMENT

FLAT

- Outdoor blinds
- Air ventilation with heat rec.
- Modem
- Washing machine

KITCHEN CORNER

- Dining table with chairs
- Kitchen unit
- Fridge with freezer
- Microwave oven
- Oven
- Dishwasher
- Induction cooktop

BEDROOM

- Double bed
- Two single beds
- Desk with chairs
- Large wardrobes

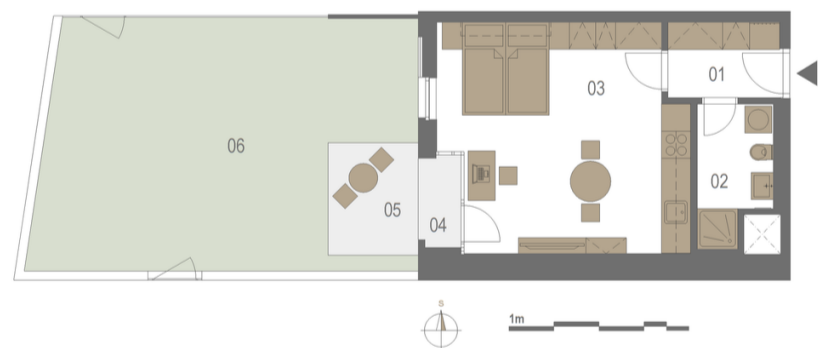
LIVING ROOM

- Television

BATHROOM

- Sink with cabinet
- Shower corner

FLAT FLOORPLAN



LEGEND

01 - předsíň	4,1 m ²
02 - koupelna, WC	4,7 m ²
03 - obytný pokoj + KK	26,5 m ²
04 - lodžie	1,9 m ²
05 - terasa	5 m ²
06 - zahrada	42 m ²

FLOOR OF THE FLAT



VYSOČANSKÝ MLÝN

Odkolkova 1045-1046, 190 00 Praha 9
 Email: vysocany@mintliving.cz
 Phone: +420 773 703 703



CIN: 099 06 151
 Main office: Na Příkopě 19, Staré Město, 110 00 Praha 1
 www.mintrezidenčnífond.cz

Mint Living Praha Vysočanský mlýn s.r.o.
 CIN: 099 06 151
 Main office: Na Příkopě 19, Staré Město, 110 00 Praha 1

Copyright © 2025 Mint Property Management s. r. o.