

mint.living

RENT OF THE
FLAT A133

Building A1 1+kk 35 m² 3th floor Z

HOW MUCH WILL I PAY?

Rent: 21 500 CZK / month
 Service Charges: 3 900 CZK / month
 Electricity: 800 CZK / month
 Water: 500 CZK / month
 Electricity and water charges are billable advances. The final billing is done annually according to actual consumption.

ADDITIONAL INFORMATION

Garage parking (optional): 2 300 CZK / month

DESCRIPTION

We offer bright, cozy, and fully furnished apartments in the Mint Living Vysočanský Mlýn residence.

COMFORTABLE LIVING, READY FOR MOVE-IN

Stylish apartments with quality furniture, a modern kitchen, and flexible bedroom layouts. A spacious bathroom, storage areas, a television, and Wi-Fi are all included. In the summer, enjoy the loggia with seating.

IDEAL LOCATION

The residence is located near the Vysočanská metro station, w...

EQUIPMENT

FLAT

- Outdoor blinds
- Air ventilation with heat rec.
- Modem
- Washing machine

KITCHEN CORNER

- Dining table with chairs
- Kitchen unit
- Fridge with freezer
- Microwave oven
- Oven
- Dishwasher
- Induction cooktop

BEDROOM

- Double bed
- Two single beds
- Desk with chairs
- Large wardrobes

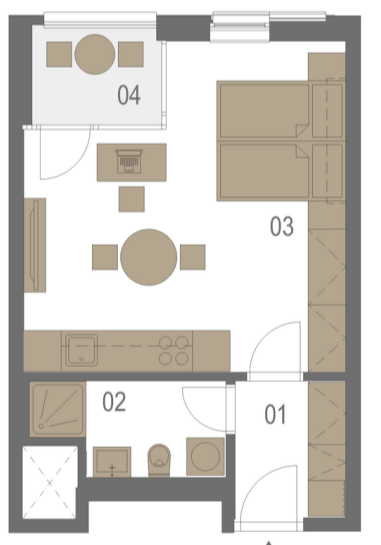
LIVING ROOM

- Television

BATHROOM

- Sink with cabinet
- Shower corner

FLAT FLOORPLAN

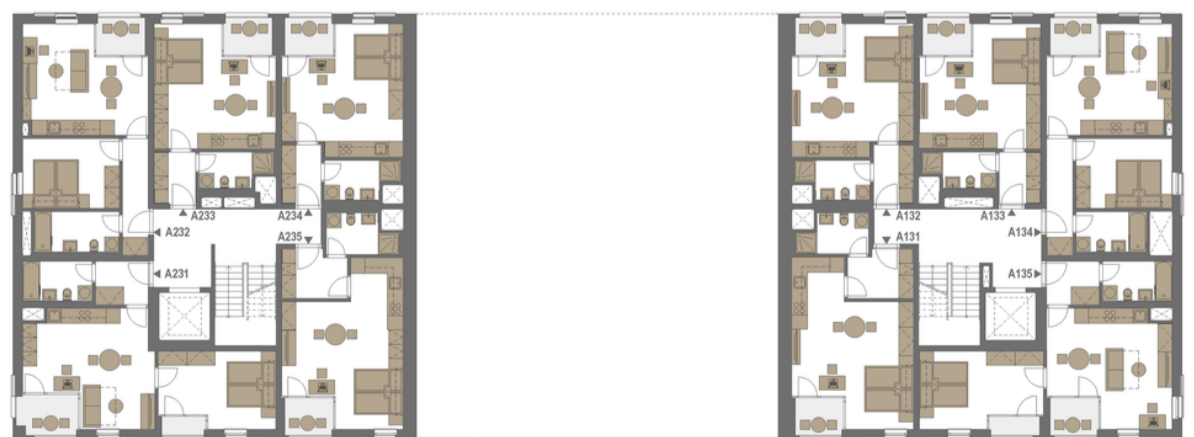


LEGEND

PŘEDSÍŇ	3,9 m ²
KOUPELNA, WC	4,3 m ²
OBYTNÝ POKOJ + KK	24 m ²
LODŽIE	3,3 m ²

FLOOR OF THE FLAT

A1
3NP



VYSOČANSKÝ MLÝN

Odkolkova 1045-1046, 190 00 Praha 9
 Email: vysocany@mintliving.cz
 Phone: +420 773 703 703

Mint Living Praha Vysočanský mlýn s.r.o.
 CIN: 099 06 151
 Main office: Na Příkopě 19, Staré Město, 110 00 Praha 1



CIN: 099 06 151
 Main office: Na Příkopě 19, Staré Město, 110 00 Praha 1
 www.mintrezidenčnífond.cz

Copyright © 2025 Mint Property Management s. r. o.